

THE WORSER BAY PROSPECTUS



CREATING MARINE EDUCATION AND RECREATION FACILITIES AND
PROGRAMMES FOR THE WELLINGTON COMMUNITY

Welcome to the Worser Bay Prospectus

The Worser Bay Prospectus is brought to you by the Worser Bay Boating Club and the Worser Bay Argosy Trust.

The Club and the Trust are bringing about some big changes at Worser Bay and would like to invite you to get in behind the projects in whatever way you can.

Worser Bay Boating Club is underway with an ambitious plan to rebuild the clubrooms. There are opportunities to support the rebuild project through the legacy programme as either a major contributor or a foundation supporter of the rebuild.

Worser Bay Argosy Trust is underway with establishing the Boat & Beach Wise programme which will provide start sailing, schools and youth programmes for the Wellington community. There are opportunities to support these programmes as sponsors or as argosy group members.

We hope you can find a way to contribute from within the mix of opportunities presented in this prospectus and look forward to the possibility of hearing from you soon.

Kind regards



Dean Stanley
Commodore, Worser Bay Boating Club



Phil Royal
Chairperson, Worser Bay Argosy Trust



Legacy Opportunities



Legacy Donations

Pay back all those years of use of the existing building by paying forward for the coming generations through a legacy donation. All donor names will be recorded on a legacy board in the clubrooms.

25 donors so far

Donations of any amount are all gratefully received by the rebuild fund raising team.



The Main Hall

We are building a community facility and at the heart of that facility is the main hall. The hall will be used by more than just the Worser Bay Boating Club. Other community groups will use the hall for meetings and activities while businesses will use the hall for events such as product launches, workshops and client functions. The hall will be named after the organisation or individual who takes up this legacy opportunity.

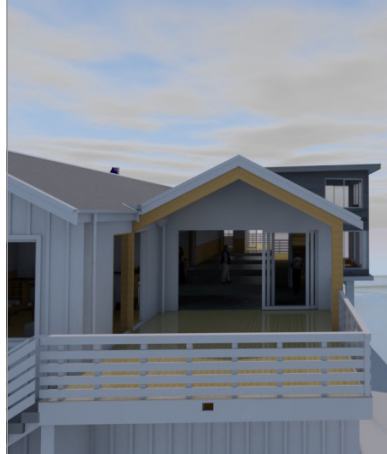
Price on application



The North Deck

As one of two decks in the new building, the North Deck connects back to the car park via a ramp and is accessible from the hall and the classroom. The deck will be named after its sponsor.

\$25,000 incl gst



The South Deck

The second deck in the new building, the South Deck overlooks the breastwork, ramp and beach and is accessible from the hall and the south lounge. The deck will be named after its sponsor.

\$25,000 incl gst



The Classroom

The classroom will play a key role in the start sailing, schools and youth programmes and will also be used as a cafe during major regattas. The classroom will be named after the Stanley family.

SOLD



The Mezzanine

The mezzanine plays an important role as the place for starting and finishing races, overseeing sailor safety and coordinating rescues. The Mezzanine will be named after the Bacon family.

SOLD



The South Lounge

The south lounge overlooks the ramp and the beach and is adjacent to the kitchen servery. Accessible from the main hall and the south deck, the south lounge will be named after its sponsor.

\$25,000 incl gst



The East Lounge

The east lounge overlooks the start and finish line, is accessible directly off the main hall and will be a great place to watch the racing from. The east lounge will be named after the Cardiff family.

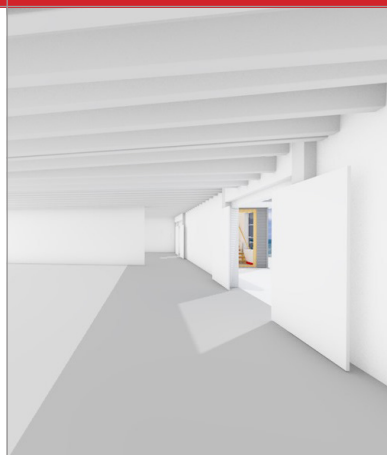
SOLD



The Rescue Boat Shed

The rescue boat shed will house three of the club's rescue boat fleet and associated equipment. The rescue boat shed will be named after the Eastern Suburbs Sports Trust.

SOLD



The Sail Boat Shed

The sail boat shed will house the majority of the member's sailing dinghies including Optimist, P, Starling, OK, Laser and Zephyr classes. The sail boat shed will be named after its sponsor.

\$25,000 incl gst



Schools Programme

The schools programme delivers safe boating and marine education activities to Wellington schools.

\$15,000 + gst per annum

Beach Carnival

An annual community day at Worser Bay with have-a-go, big digs, beach games, live music and fun galore.



\$10,000 + gst per annum



Youth Programme

The youth programme provides coaching and sport science support to youth sailors in Wellington, the Central Districts and the Upper South Island.

\$15,000 + gst per annum

The Argosy Group

The Argosy Group of companies and individuals help fund Boat & Beach Wise. The target is 100 members.



45 members so far

\$600 + gst per annum



Penguin hotel



Paua nursery & snorkel trail



Anemone garden

Marine Habitat Enhancement

A key part of the Boat & Beach Wise schools programme is students working with the local community to enhance marine habitat around Worser Bay by creating and monitoring a penguin hotel, a paua nursery and an anemone garden. Naming rights are available to the company or individual who sponsor this ongoing initiative.

Price on application

THE WORSER BAY PROSPECTUS

CREATING MARINE EDUCATION AND RECREATION FACILITIES AND PROGRAMMES FOR THE WELLINGTON COMMUNITY

To take up one of the Worser Bay Boating Club **LEGACY** opportunities please contact Nigel Lloyd on ... **0274480282**

To take up one of the Boat & Beach Wise **PARTNERSHIP** opportunities please contact Sarah Bacon on ... **021471972**